

Pattern für Rhythmusgitarre

Grundpattern

Ralph Stahl

A **B** **C** **D**

16 Kombinationen der Grundpattern

AA **AB** **AC** **AD**

BA **BB** **BC** **BD**

CA **CB** **CC** **CD**

DA **DB** **DC** **DD**

'Der Luftschlag' (Haltebogen auf die 3)

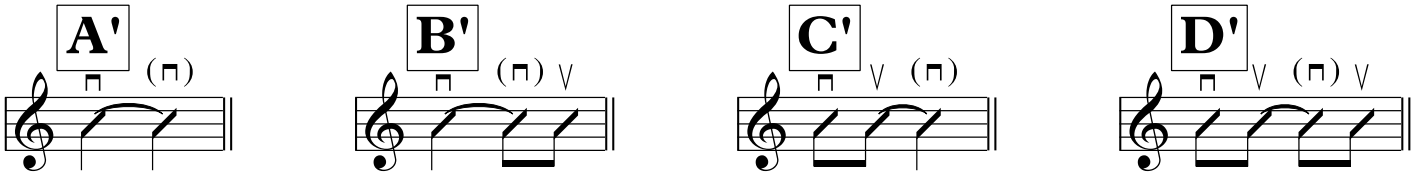
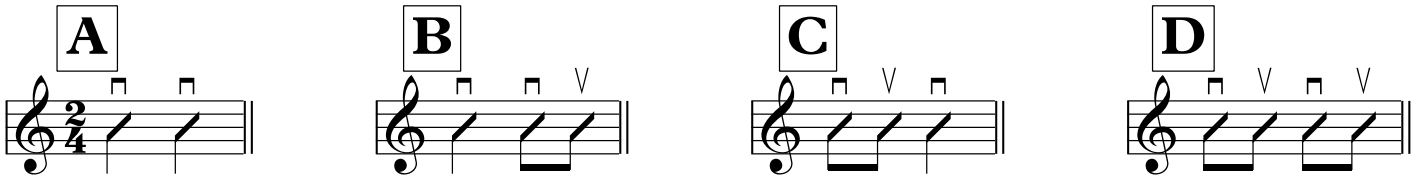
AA **AB** **AC** **AD**

BA **BB** **BC** **BD**

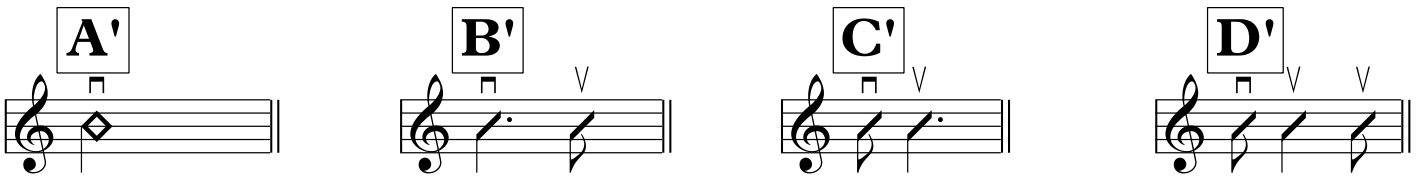
CA **CB** **CC** **CD**

DA **DB** **DC** **DD**

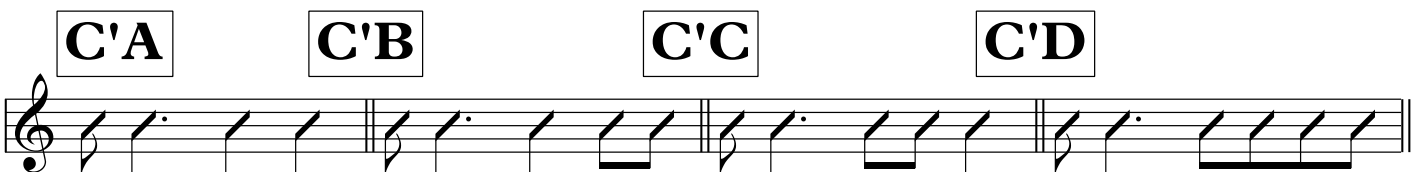
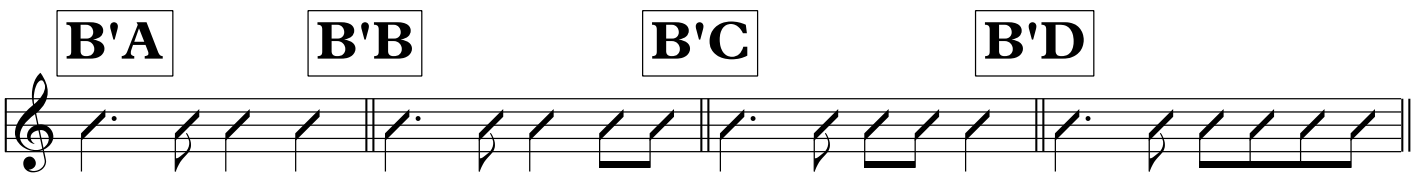
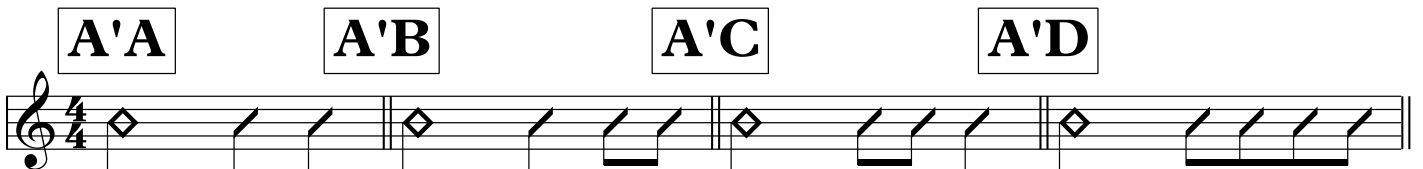
Erweiterte Grundpattern (Luftschlag auf der 2)



Andere Schreibweise



16 Kombinationen erw. Grundpattern vorne



AA' **BA'** **CA'** **DA'**

Four musical staves in 4/4 time, each showing a different combination of notes for the 'erw. Grundpattern hinten'. The first staff (AA') has notes on strings 1, 2, 3, 4. The second (BA') has notes on strings 2, 3, 4, 5. The third (CA') has notes on strings 3, 4, 5, 6. The fourth (DA') has notes on strings 4, 5, 6, 7.

AB' **BB'** **CB'** **DB'**

Four musical staves in 4/4 time, each showing a different combination of notes for the 'erw. Grundpattern hinten'. The first staff (AB') has notes on strings 1, 2, 3, 4. The second (BB') has notes on strings 2, 3, 4, 5. The third (CB') has notes on strings 3, 4, 5, 6. The fourth (DB') has notes on strings 4, 5, 6, 7.

AC' **BC'** **CC'** **DC'**

Four musical staves in 4/4 time, each showing a different combination of notes for the 'erw. Grundpattern hinten'. The first staff (AC') has notes on strings 1, 2, 3, 4. The second (BC') has notes on strings 2, 3, 4, 5. The third (CC') has notes on strings 3, 4, 5, 6. The fourth (DC') has notes on strings 4, 5, 6, 7.

AD' **BD'** **CD'** **DD'**

Four musical staves in 4/4 time, each showing a different combination of notes for the 'erw. Grundpattern hinten'. The first staff (AD') has notes on strings 1, 2, 3, 4. The second (BD') has notes on strings 2, 3, 4, 5. The third (CD') has notes on strings 3, 4, 5, 6. The fourth (DD') has notes on strings 4, 5, 6, 7.

16 Kombinationen nur erw. Grundpattern

A'A' **A'B'** **A'C'** **A'D'**

Four musical staves in 4/4 time, each showing a different combination of notes for the 'erw. Grundpattern'. The first staff (A'A') has notes on strings 1, 2. The second (A'B') has notes on strings 1, 2, 3. The third (A'C') has notes on strings 1, 2, 3, 4. The fourth (A'D') has notes on strings 1, 2, 3, 4, 5.

B'A' **B'B'** **B'C'** **B'D'**

Four musical staves in 4/4 time, each showing a different combination of notes for the 'erw. Grundpattern'. The first staff (B'A') has notes on strings 2, 3. The second (B'B') has notes on strings 2, 3, 4. The third (B'C') has notes on strings 2, 3, 4, 5. The fourth (B'D') has notes on strings 2, 3, 4, 5, 6.

C'A' **C'B'** **C'C'** **C'D'**

Four musical staves in 4/4 time, each showing a different combination of notes for the 'erw. Grundpattern'. The first staff (C'A') has notes on strings 3, 4. The second (C'B') has notes on strings 3, 4, 5. The third (C'C') has notes on strings 3, 4, 5, 6. The fourth (C'D') has notes on strings 3, 4, 5, 6, 7.

D'A' **D'B'** **D'C'** **D'D'**

Four musical staves in 4/4 time, each showing a different combination of notes for the 'erw. Grundpattern'. The first staff (D'A') has notes on strings 4, 5. The second (D'B') has notes on strings 4, 5, 6. The third (D'C') has notes on strings 4, 5, 6, 7. The fourth (D'D') has notes on strings 4, 5, 6, 7, 8.

Perkussiver Schlag

Snare - Effekt (auf die Saiten schlagen)

i (Nagel) *i m a* (Handfläche)

i (Nagel) *i m a* (Handfläche) *i* (Kuppe)

i (Nagel) *p* (Nagel) *i m a* (Handfläche)

i (Nagel) *p* (Nagel) *i m a* (Handfläche) *i* (Kuppe)

Snare - Effekt (auf 2 und 4)

AA **AB** **AC** **AD**

BA **BB** **BC** **BD**

CA **CB** **CC** **CD**

DA **DB** **DC** **DD**

Snare - Effekt auf die 1

i
m
a
(Handfläche) *i*
(Nagel)

i
m
a
(Handfläche) *i* *p*
(Nagel) (Nagel)

i
m
a
(Handfläche) *i* *i* *p*
(Kuppe) (Nagel) (Nagel)

i
m
a
(Handfläche) *i* *i* *p*
(Kuppe) (Nagel) (Nagel)

Alla Breve (2/2 Takt) Snare - Effekt auf 3

AA **AB** **AC** **AD**

BA **BB** **BC** **BD**

CA **CB** **CC** **CD**

DA **DB** **DC** **DD**

Bassdrum Schlag (Auf den Korpus schlagen)

Handfläche auf Korpus *i*
(Nagel)

Handfläche auf Korpus *i* *p*
(Nagel) *(Nagel)*

Handfläche auf Korpus *i* *i* *p*
(Kuppe) *(Nagel)* *(Nagel)*

Handfläche auf Korpus *i* *i* *p*
(Kuppe) *(Nagel)* *(Nagel)*

Alla Breve (2/2Takt) mit perkussiven Schlägen Korpus und Saiten

AA **AB** **AC** **AD**

BA **BB** **BC** **BD**

CA **CB** **CC** **CD**

DA **DB** **DC** **DD**

Pausen durch Abdämpfen
(auf 2 bzw. 1)

i
m
a
(Nagel) (Handballen)

(Handballen) *i*
m
a
(Nagel)

i
m
a
(Nagel) (Handballen) *p*
(Nagel)

(Handballen) *i*
m
a
(Nagel) *p*
(Nagel)

i
m
a
(Nagel) *p*
(Nagel) (Handballen)

(Handballen) *p*
(Nagel) *i*
m
a
(Nagel)

i
m
a
(Nagel) *p*
(Nagel) (Handballen) *p*
(Nagel)

(Handballen) *p*
(Nagel) *i*
m
a
(Nagel) *p*
(Nagel)

Platz für den Bass oder Bassdrum

AA **AB** **AC** **AD**

BA **BB** **BC** **BD**

CA **CB** **CC** **CD**

DA **DB** **DC** **DD**

Platz für die Snare

AA	AB	AC	AD
BA	BB	BC	BD
CA	CB	CC	CD
DA	DB	DC	DD

Gleiches Pattern - unterschiedlicher Klang

<i>i</i> <i>m</i> <i>a</i> (Nägel)	(Handballen)	<i>i</i> <i>m</i> <i>a</i> (Nägel)	(Handballen)
